

24 REDCLIFFE ROAD • LONDON • SW10





REDCLIFFE
24
ROAD





A Modern Classic

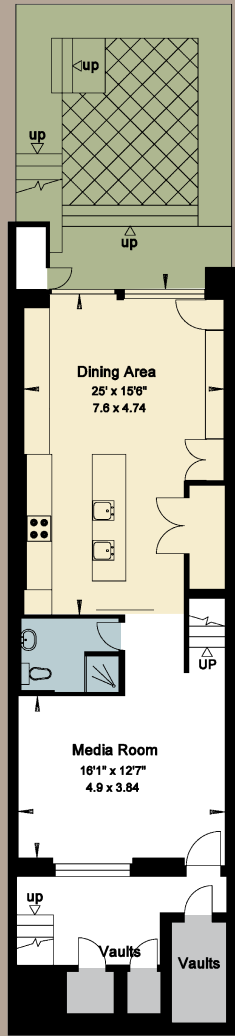
A classic Victorian terraced house internally remodelled and rearranged to provide an exciting contemporary home. The house has bright and spacious accommodation arranged over four floors, with a secluded private garden to the rear. It also benefits from air conditioning.

Accommodation & Amenities

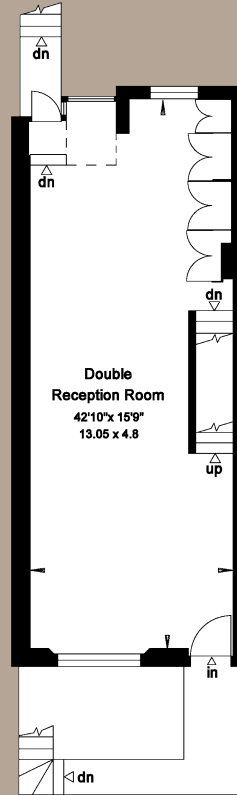
Double Reception Room • Kitchen with Dining Area • Media Room • Master Bedroom with En Suite Bathroom, Dressing Room & Balcony • 2 Further Bedrooms • Further Bathroom • Shower Room • Study/Bedroom 4 • Garden • Roof Terrace • Vaults

Freehold

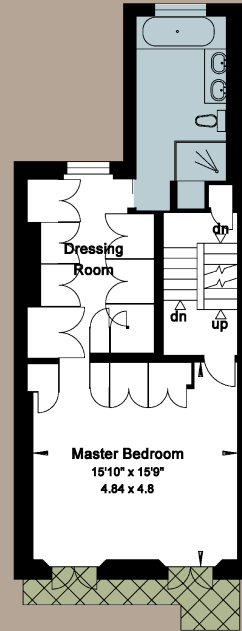
Price: £3,450,000 STC



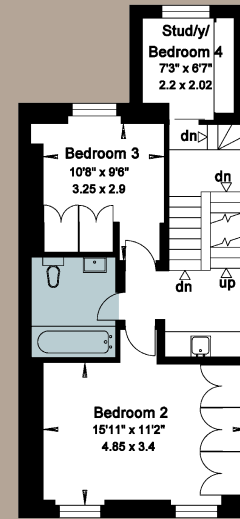
LOWER GROUND FLOOR



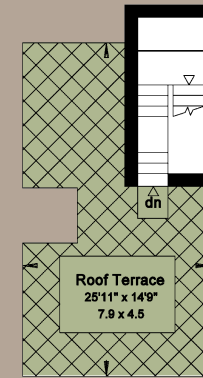
GROUND FLOOR



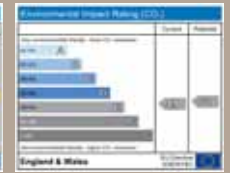
FIRST FLOOR



SECOND FLOOR



ROOF TERRACE



GROSS INTERNAL AREA: 2,595 SQ FT
(INCLUDING VAULTS) 241 SQ M

Chelsea
020 7349 4300
KnightFrank.co.uk

AYLESFORD
INTERNATIONAL
020 7351 2383
www.aylesford.com
sales@aylesford.com